



Company Overview

Wild Surveys is a terrestrial ecological consultancy set up in 2006 by its current Managing Director, Helen Lundie.

Based in Renfrewshire, Scotland, we provide ecological services to a broad range of clients throughout Scotland, including local authorities, government agencies, engineering and construction companies, architects and homeowners.

Our team is composed of ecologists with a wide variety of skills and experience. Since inception, Wild Surveys has specialised in providing practical and cost-effective ecological solutions and advice for planning applications and construction activities in a range of project types.

Services

Ecological services provided include:

- Ecological Impact Assessment / Ecology and Nature Conservation Chapters
- Extended Phase 1 survey / UK Habs survey
- Detailed Botanical Survey (NVC, GWDTE)
- Preliminary Ecological Appraisal
- eDNA Testing
- Protected Species Surveys, Licensing and Monitoring
- Ornithological Surveys, including nesting bird surveys and breeding bird surveys
- Ecological Mitigation Design
- Ecological Watching Brief / Ecological Clerk of Works (ECoW)
- Invasive Non-Native Species Surveys
- Development Licence Applications for protected species
- Advice on how to comply with NPF4
- Biodiversity Net Gain Calculations and Assessments
- Biodiversity Enhancement Strategies
- Habitat Restoration and Management advice
- Habitat Creation and Management (site work)

Our team:

WSL's ecologists have between 2 and 30 years of experience and hold licences for a number of protected species, including badgers, bats, birds, barn owls, great crested newts, otters and four are LANTRA qualified tree climbers. All of our ecologists are also members of CIEEM, and hold valid CSCS.

The number of ecologists employed by WSL is expected to remain unchanged for the foreseeable future and allows us to provide upwards of 15,000 hours of in house services to our clients each year.



www.wildsurveys.co.uk

The Gatehouse, 35 Porterfield Rd, Renfrew, PA4 8DJ

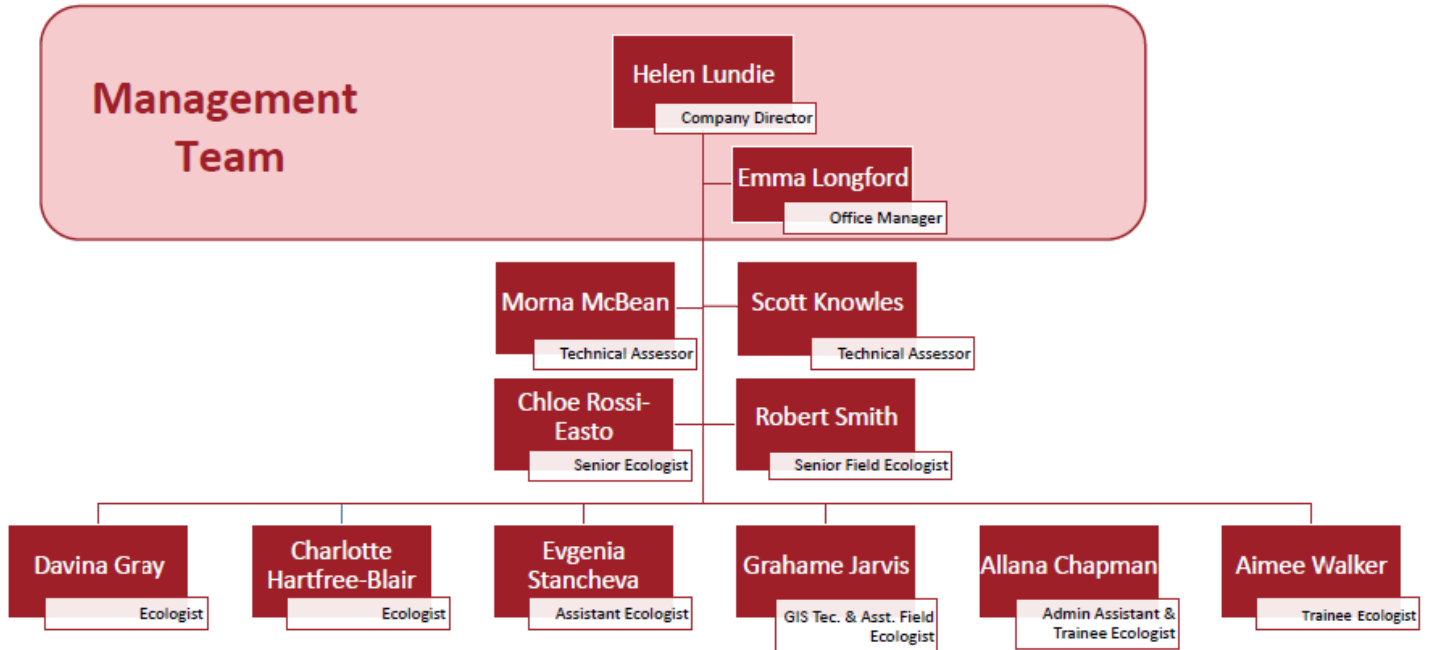
Registered in Scotland: SC312348

Tel: 0141 887 2770



The WSL team is currently made up as follows:

Wild Surveys Ltd - organisational chart



Our team work collaboratively to ensure each project benefits from the maximum amount of expertise to better support our clients' development projects and each of them is responsible for managing their respective projects from beginning to end. By working in this way, we are better able to provide our clients with a time and cost-efficient service tailored to their needs. This also ensures that our clients always have access to at least one ecologist who is fully apprised of their project that they can get in touch with for any questions or issues they face.

Sub-contractors

WSL has a network of trusted sub-contractors for botany surveys, terrestrial mammal surveys, ornithology surveys, hydrology surveys, ariel bat surveys and arborist surveys. These sub-contractors have been vetted through our vendors approval procedure and have been collaborating with us successfully for several years now. All approved subcontractors must hold the appropriate licences as well as insurances at least equivalent to WSL's. We are able to avail of the services of our subcontractors to meet our clients' survey needs when we are unable to resource this internally.



www.wildsurveys.co.uk

The Gatehouse, 35 Porterfield Rd, Renfrew, PA4 8DJ

Registered in Scotland: SC312348

Tel: 0141 887 2770



Seasonal bat surveyors

As well as WSL's permanent staff, and its network of subcontractors, WSL has recruited and trained seasonal workers to ensure we can meet our clients' requirements for surveys during the active bat season. A large proportion of these seasonal staff return to us year after year, and some have been working with us for over a decade.

WSL recruits between 4 to 5 new trainees each year to ensure it can maintain a high number of suitably experienced seasonal surveyors year after year and continue to provide reliable survey information to its customers. Trainees must complete our in house training and meet a set of pre-determined training targets before WSL will consider offering them seasonal work.

All seasonal surveyors are encouraged to obtain their bat licences and WSL will support them in achieving this where reasonably possible. Further training opportunities are promoted to them as and when this becomes available. Having access to such a high number of seasonal surveyors allows WSL to meet its clients' high demand for this service at short notice. We pride ourselves in being able to meet our existing clients needs, while servicing new clients, despite a full order book thanks to access to our ample staffing resources.



www.wildsurveys.co.uk

The Gatehouse, 35 Porterfield Rd, Renfrew, PA4 8DJ

Registered in Scotland: SC312348

Tel: 0141 887 2770